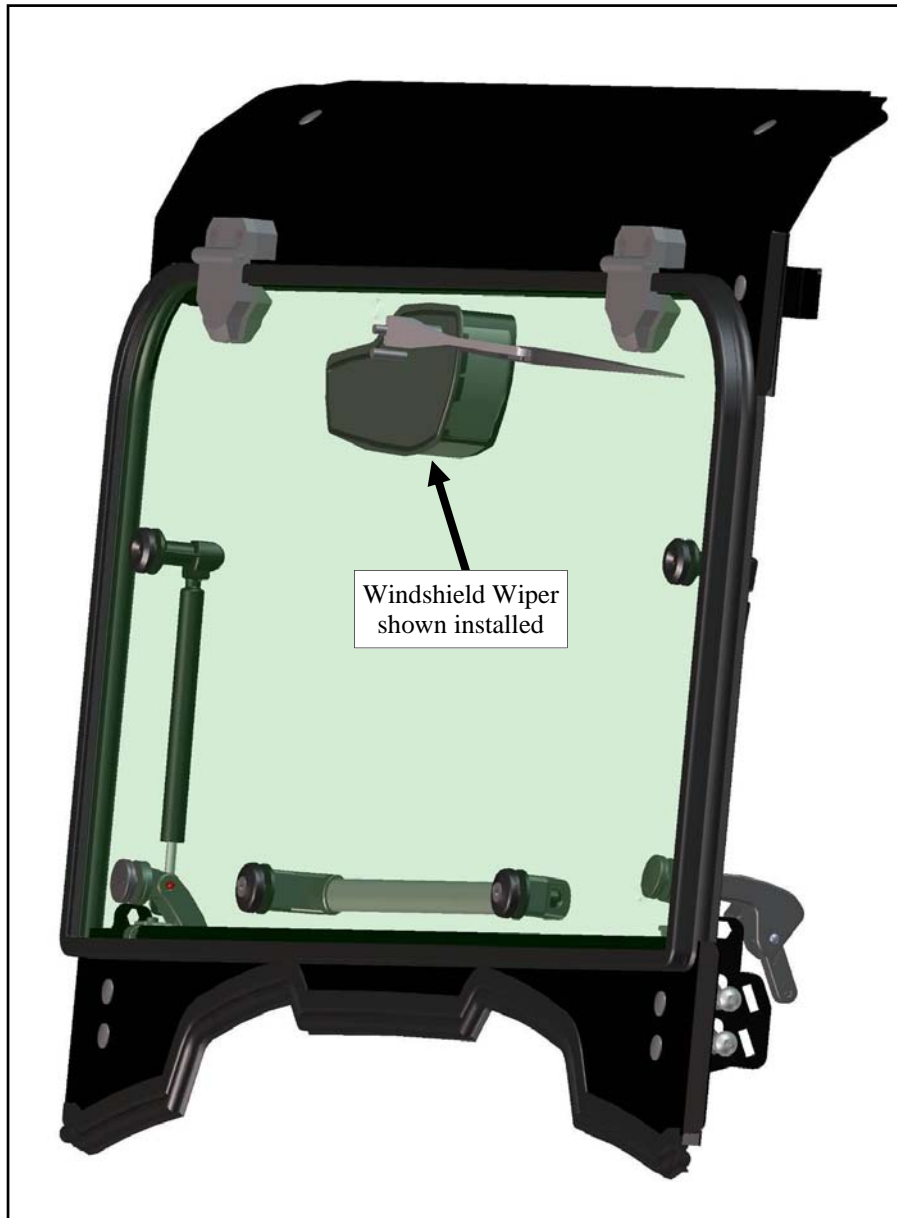




**HONDA PIONEER 700-2 and 700-4
WIPER KIT p/n: 1HONP700CVWPR**

The contents of this envelope are the property of the owner.
Be sure to leave with the owner when installation is complete.



California Proposition 65

⚠ WARNING ⚠

Engine exhaust, some of its constituents, certain vehicle components and fluids, contain or emit chemicals known to the State of California to cause cancer and birth defects or other reproductive harm.

revised: 4-11-2017

1. WIPER INSTALLATION

1.1 Per fig. 1.1, mount the wiper motor and the flat cover plate to the inside surface of the windshield. **CAUTION:** The inside surface of the windshield is coated with a plasticized safety film. Use care to avoid scratching the inside surface.

Sandwich the windshield where shown. Orient the bosses on the left-most plastic washers as shown (pointing towards the windshield location/placement). **NOTE:** if the bosses do not fit into the holes in the windshield, the installation can still be completed as is.

1.2 At the installer's discretion, create an opening (a rectangle) in the dash for the switch to mount into. Fig. 1.2 is one suggested location and orientation.

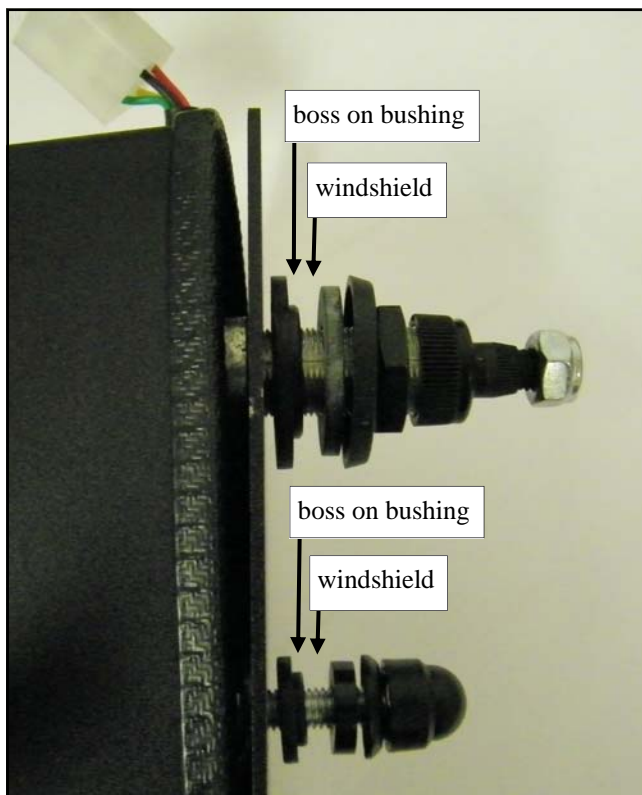


Fig. 1.1



Fig. 1.2 (view from driver's side)

1. WIPER INSTALLATION (cont'd.)

1.3 Connect the four loose push-on terminals to the white block terminal on the wiper motor. Match the colored wires with each other (red to red, etc.). Per fig. 1.3, run the wire harness up and then left towards the driver's side and wire tie it two places (approximately 10" apart) to the upper ROPS tube as shown.

1.4 Per fig. 1.4, route the wire harness over to the bolt near the top left corner of the windshield as shown and use one of the supplied P-Clamps to secure the wire harness.

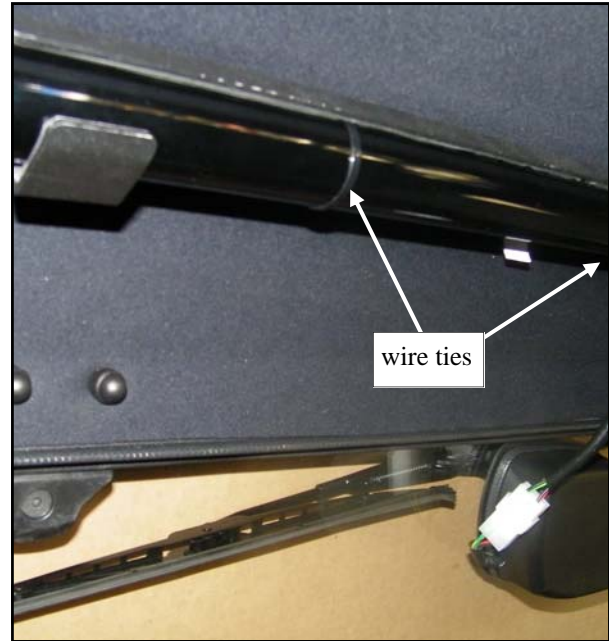


Fig. 1.3 (view from driver's seat)

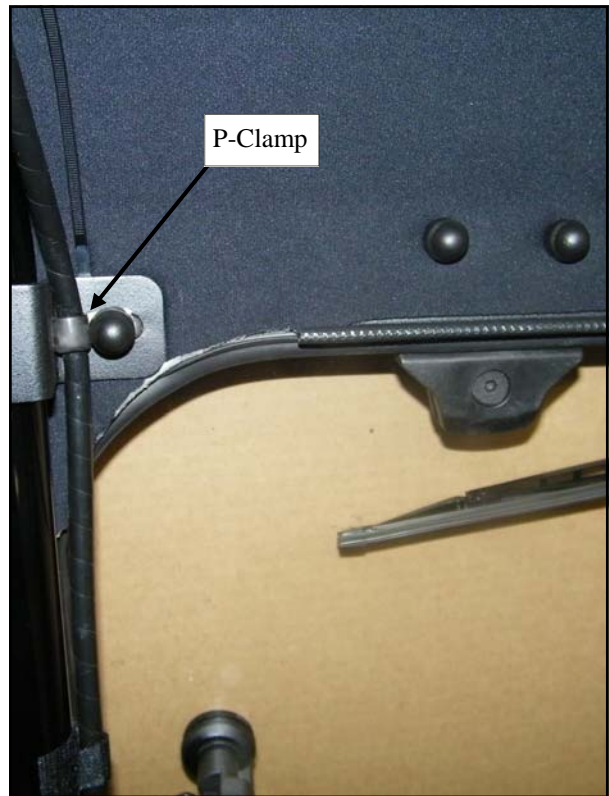


Fig. 1.4 (view from driver's seat)

1. WIPER INSTALLATION (cont'd.)

1.5 Per fig. 1.5, route the wiring harness down the front left tube as shown. Use the supplied Velcro as follows:

Cut the PSA (Pressure-Sensitive Adhesive) Hook Velcro into 3 pieces that are 1-1/2" long. Apply these approximately where shown (approximately 4" to 6" apart) on the inside surface of the vertical ROPS tubing. **NOTE:** Apply to a clean, dry surface at room temperature for best adhesion.

Cut the non-PSA Loop Velcro into 3 pieces that are 2" long. Straddle the wire harness and connect each end or side to the mating Velcro as shown.

1.6 Per fig. 1.6, a second P-Clamp to secure the wire harness can be installed to the bolt shown.

1.7 At the installer's discretion, finish routing the wire harness towards the battery and switch (see fig. 1.7) and make the final connections.



Fig. 1.5 (view from driver's side)



Fig. 1.6 (view from driver's side)

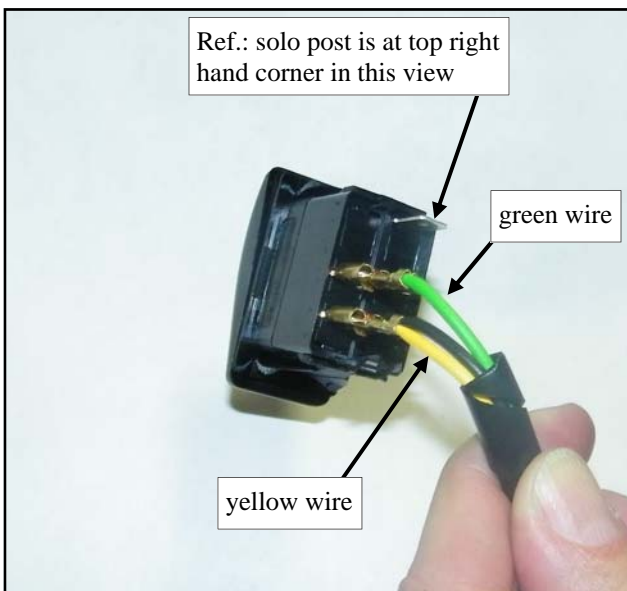


Fig. 1.7

SERVICE PARTS

PART NUMBER:	DESCRIPTION:
9SV-00014	WIPER ARM (QTY.: ONE)
9SV-00035	WIPER BLADE (QTY.: ONE)
9SV-00096	SWITCH FOR WIPER (QTY.: ONE)